



Photography Best Practices



Instructions

Photographs (300 dpi or above JPEGs) of project illustrating specific work highlighted in narrative Before and after pictures, taken from same perspectives, is recommended.



These photos are successful because:

- Perspectives are the same.
- Nothing impeding views of "after" photo to see changes.



How could these be more successful?

- Ensure perspectives are the same.
- Take pictures at times cars are not blocking unimpeded views.



Photo Map Best Practices (Residential)

Instructions

IF an applicant has a floor plan of the submission property, feel free to use it as the basis for the map. Otherwise, a basic hand- or computer-drawn view showing the perspectives from pictures were taken is fine.

The number of views plotted on the photo log should correspond to the number of pictures included in the submission. This example features two exterior and three interior views.

Example of Residential Photo Map

1. Living room, looking south, illustrating reinstalled wall
2. Bedroom, looking north, illustrating repaired windows
3. Bathroom, looking south, illustrating historically inspired tilework.
4. North elevation oblique, looking southeast
5. East elevation, looking west

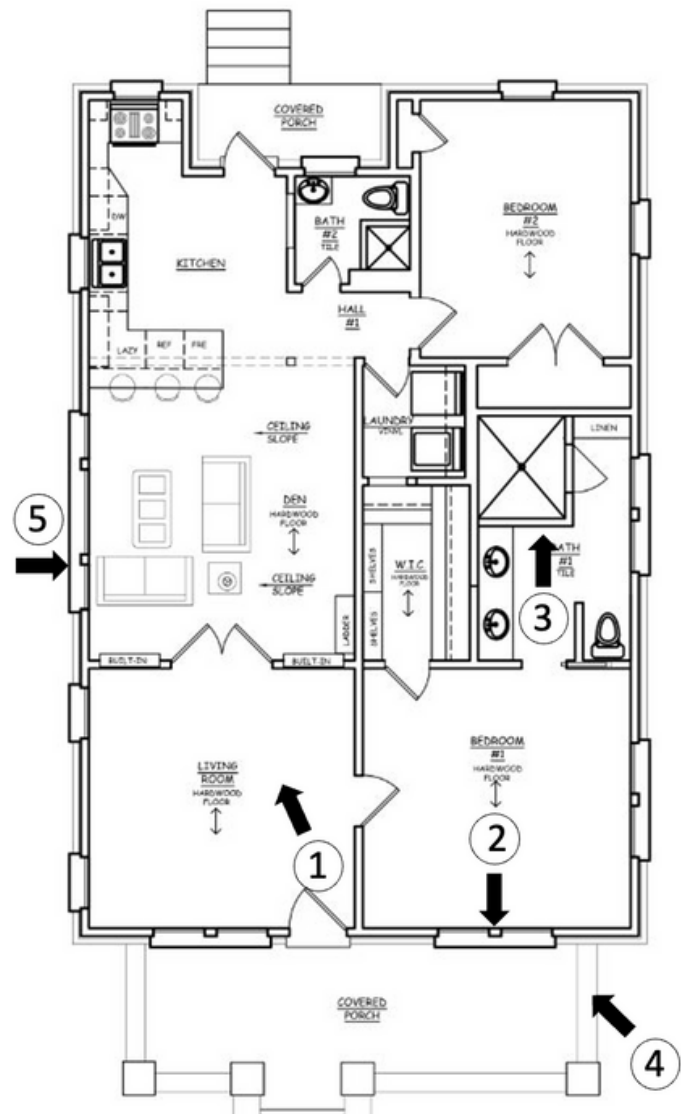




Photo Map Best Practices (Commercial)

> Instructions

If an applicant has a floor plan of the submission property, feel free to use it as the basis for the map. Otherwise, a basic hand- or computer-drawn view showing the perspectives from pictures were taken is fine.

The number of views plotted on the photo log should correspond to the number of pictures included in the submission. This example features two exterior and three interior views.

> Example of Residential Photo Map

1. West elevation (façade), looking east, illustrating rehabilitated entrance
2. Interior, looking west, illustrating repaired windows
3. Interior, looking north, illustrating historic window restoration.
4. Interior view, looking southeast, illustrating renovated wall
5. North elevation, looking south, illustrating repaired masonry wall

